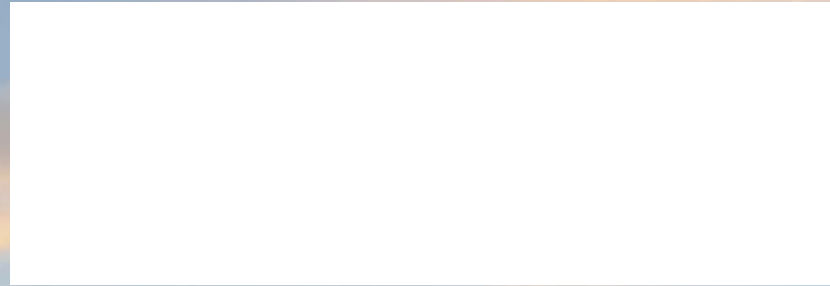
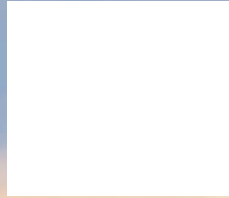


*Outward Bound California
1539 Pershing Drive
San Francisco, CA 94129*



STAY CONNECTED – STAY INVESTED

*Follow us on social media
Check out our course offerings
Volunteer at our basecamps
Consider us in your year-end giving*

Learn more at outwardboundcalifornia.org



FORWARD

Annual Report 2013



**OUTWARD BOUND
CALIFORNIA**

A WORD FROM OUR EXECUTIVE DIRECTOR

Dear Friends,

On our courses the Leader of the Day helps guide her group, set the route, plan rest stops, and keep up morale. Some days are smooth sailing and everything works to plan. Other days are full of curveballs, with challenge after challenge presenting themselves. Yet with compassion for one another, a spirit of adventure, and a healthy dose of grit and determination, the group makes its way forward.

We too have made our way forward at Outward Bound California. We celebrate 2013 as our second full year of operation as an independent Outward Bound School, part of the National Network of OB Schools across the United States. Proving that our success of 2012 was not a fluke but rather steady progress, 2013 was a year where:

We increased our Student Program Days by 11% to a total of 6,869 overall while continuing our strong record of safety and high program quality.

We invested in our field staff, offering 28% more training and Professional Development days than 2012, and increased field staff pay, solidifying one of the highest retention rates in the industry.

We made strong progress in our fundraising efforts, adding new donors, new philanthropic partnerships, and made significant headway in planning and raising funds for our First Annual City Skyline Challenge—a rappelling fundraiser held in March 2014.

2013 also saw a comprehensive redesign of our local school and community-based programs operated out of our Bay Area base. In close coordination with our partners, we worked to increase the average number of days in the field for our students, serving 15 new and renewed community partners - all while improving measurable outcomes.

Not to be outdone, in 2013 our board and staff began the process by which we will chart our organizational future, diving into the exciting world of strategic planning. This work, carrying over in 2014, will be the foundation from where we gather our collective aspirations in order to build an Outward Bound California that can best serve our communities for decades to come. 2013 was a great year and—spoiler alert!—2014 already looks to be even better.

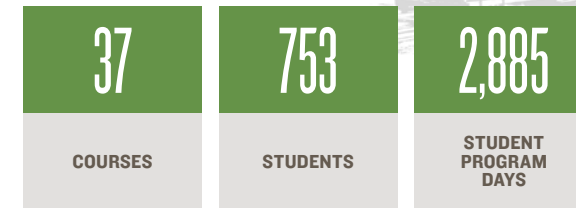
With respect and gratitude,



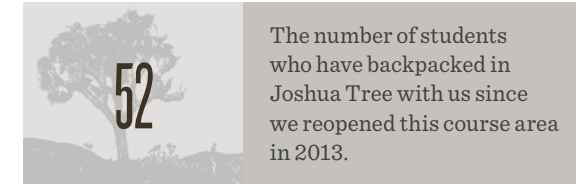
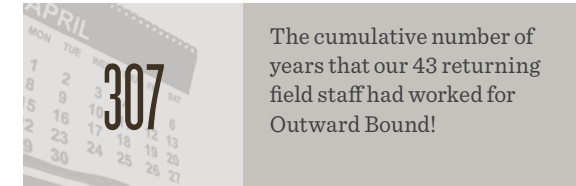
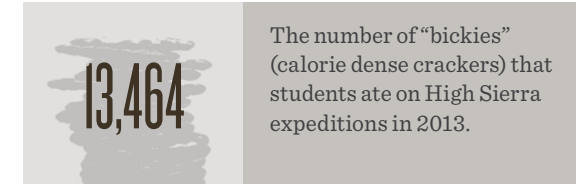
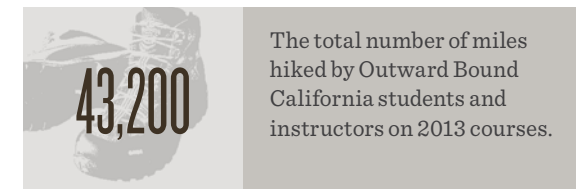
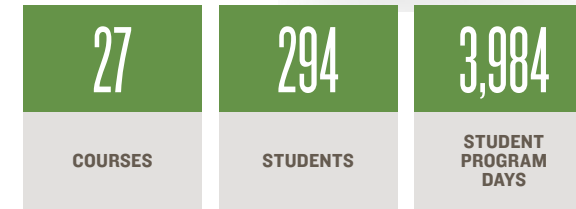
Josh Brankman, Executive Director

2013 BY THE NUMBERS

BAY AREA CENTER



HIGH SIERRA



PROGRAM IMPACT: SKILLS FOR LIFE

“Outward Bound is more relevant now than ever. These days schools are filled with students who are technologically competent but need to learn how to be brave, compassionate, and adventurous.”

Reno Taini, Outward Bound California Board Member 2008-2013

“As teachers we sometimes forget that we’re not just preparing our students academically, we are preparing them for life, for future leadership opportunities and for what type of person they are going to be in the world. It’s important to take kids out and just have a life experience. Afterwards, a lot of academic goals and challenges at home suddenly don’t seem as daunting.”

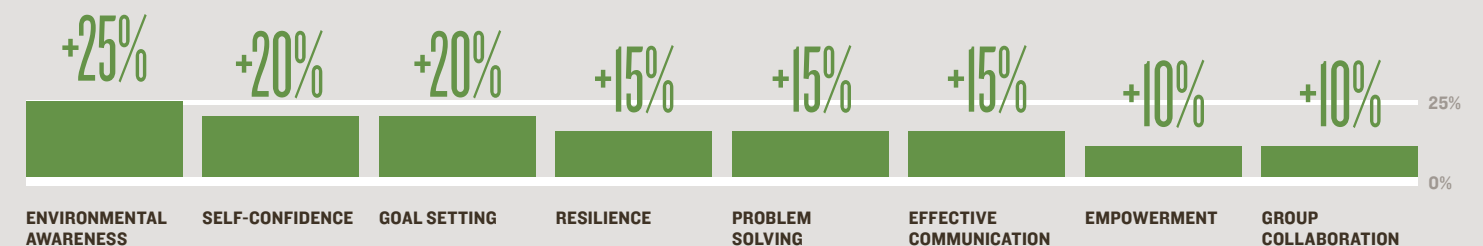
Greg Gallup, 6th grade teacher at Edison Charter

“It’s been 20 years since I participated in Outward Bound, and I now run a large business and manage a team of people. I believe the leadership skills I learned in Outward Bound contributed to my early career development, and outside of work to my love of the outdoors.”

Megan Ford, Outward Bound alum and City Skyline Challenge volunteer fundraiser

MEASURING STUDENT GROWTH

Comparing students’ “pre” and “post” responses to a survey instrument, we found students on average had gained:



UDVAL'S JOURNEY



MEET UDVAL

She is a two-time Outward Bound California alum whose expeditions were made possible through the generosity of donors like you. Udval immigrated to the US from Mongolia three years ago. She faced some tough circumstances growing up in Mongolia and then when she was adjusting to life in San Francisco and learning English as a second language. Her compassion, leadership and commitment to service have found their full expression through Outward Bound.



THE SPARK

Udval got a taste for Outward Bound last spring when she joined her classmates for a 5-day Peer Leadership Expedition in the Bay Area. We offered this course to her school at a significantly discounted rate, given that the majority of youth there are lower-income. Inspired by this first experience, she then applied for our yearlong Youth Leadership Corps (YLC), a merit-based scholarship program which includes a 14-day expedition in the High Sierra.

“There were days when I wanted to quit and go home but the program taught me to appreciate each moment and that giving up is not an option.”

LOOKING AHEAD

Udval will be a senior this fall and has been elected Student Body President. One of the big things she wants to accomplish is to win a grant that would allow the school to offer Advanced Placement classes. She has big dreams for her future. She hopes to attend UC Berkeley, Stanford or Harvard and major in business with a minor in science.



PREPARING FOR ADVENTURE

Udval worked with our Student Services representatives to prepare for this expedition. She asked questions about what to expect on a longer course and how she should prepare physically. She started running, hydrating, and stretching to get her body ready for the rigors of living at high altitude.

RISING TO THE CHALLENGE

When challenges cropped up, Udval would always engage the problem head on and help facilitate a solution. She kept up a positive attitude despite the real struggles she felt inside: “There were days when I wanted to quit and go home but the program taught me to appreciate each moment and that giving up is not an option.”

SETTING OUT INTO THE UNKNOWN

With a crew of eight other students and two instructors, Udval headed out into the wilderness. She and her crew carried heavy packs, hiked and navigated long routes, slept out under the stars, worked to improve their leadership skills, and tackled the daunting 170 ft Kings Rappel.

PAYING IT FORWARD

Udval has shown a deep appreciation for the Outward Bound scholarships she has received: “I feel that this is a once in a lifetime moment that made a huge impact on me. If I did not receive a scholarship, I wouldn't have been able to take part.” Udval is committed to paying it forward. So much so that in March, she courageously rappelled in the City Skyline Challenge to help raise scholarship funds for future students.



“If I didn't receive a scholarship, I wouldn't have been able to take part.”

FOR MORE STORIES

VISIT US ONLINE

2013 DONORS AND LEADERSHIP VOLUNTEERS (JANUARY 1, 2013 - DECEMBER 31, 2013)

Gandhi once said, "In a gentle way, you can shake the world." You, our generous supporters and donors, have done just that through your philanthropic investment in Outward Bound California. We can't thank you enough!

\$50,000+

William K. Bowes, Jr. Foundation
The Stupski Foundation

\$25,000 - \$49,999

Veronica and Greer Arthur
Arthur M. Blank Foundation
Arthur & Carlyse Ciocca
The Joseph Drown Foundation
Winn Ellis and David Mahoney
The GGS Foundation
George and Karen McCown
The Syzygy Foundation
The Walther Foundation

\$10,000 - \$24,999

The Ahmanson Foundation
Anonymous
Kim and Smoky Bayless
Maida and Josh Brankman
The Dean and Margaret Leshner Foundation
Douglas and Virginia Levick
Planet Granite
Vital Projects Fund
Greg Yap and Mauria Finley

\$5,000 - \$9,999

Ginger and Patrick J. Connolly
William and Phyllis Draper
Dana and Robert Emery
Shauna M. and Kevin B. Flanigan Family Foundation
Franklin Templeton Foundation
Duncan and Katherine Kennedy
Stasia Ann Obremsky and Daniel Carroll
The Bernard Osher Foundation
Gordon Russell
May and Stanley Smith Charitable Trust

\$2,500 - \$4,999

Matt and Franz Cusick
John and Laura Fisher
The Fletcher Bay Foundation
Terry and Sharon Hartshorn
Margaret Karp

\$1,000 - \$2,499

Mary Anne and Leonard Baker, Jr.
Thomas W. Borden
John Buoymaster
Kevin Causey and Cydney Payton
Randi and Bob Fisher
The Samuel Goldwyn Foundation
Noah Goldberg

Jim and Katie Hansen

John Kehl
Charles and Dancy Kittrell
The George Lucas Family Foundation
Briggs and Isabelle McAndrews
Meagan and Dan Nye
The Orange Tree Foundation
Robert J. Oster
Jack R. Peat
Usha and Joseph Robillard
Topher and Courtney Solmssen
Mary and Jerome Vascellaro
Bobbie and Mike Wilsey

\$500 - \$999

Anonymous
Apple Matching Gifts Program
Gordon and Sally Atkinson
Bay Area Sports Hall of Fame
Eric Boales
Wynn and William Burkett
The Capital Group Companies
Edward Diffendal
Mindy Glass
David H. Grubb
John and Jennifer Hain
Helen Hwang
Bob and Betty Joss
Seymour F. Kaufman
Malcolm MacNaughton, Jr.
John and Barbara Packard
Ward and Mary P. Paine
John Read
David Roloff
Kip Webb and Claire Ellis
Amanda Weitman

\$250 - \$499

Douglas and Judy Adams
Brett Allard
Vanessa Baker
Ronald and Ruth Baker
Sylvia Bereknyci
J. Thomas and Jennifer Bevan
John and Carol Bulkeley
Lynn Challenger
Harold Cranston
Rajen Dalal and Linda Burch
Ralph Drybrough
Rikki Dunn
Eliza B. Eagle
Ryan and Amanda Enright
Diana and Freeman Ford
David Godvin
Chase Gruszewski
Harvey and Peggy Hinman

Deirdre Hockett
Steve Johnson
Elaine Kamil
Heidi Kaseff and Lee Davisson
Dr. Richard Kravitz
Anne Marie Krogh
Jonathan Liebttag
Gabriel Mass
Hilary and Mark McInerney
Bill McLeod
Michael A. Meade
Jennifer and Jim Mills
Lawrence Pace
Kenneth Park
John and Irene Piskura
Tamrin Rice
Art and Kadi Ringness
Morgan Roach
Lesley Ross
Cassy Roumell
Glen Ryland
Patricia Stone
DJ Tierney
Jarad Vasquez
Trudi Vetterlein and John Silvestrini
Peter Wendell
Grace Won and Richard Holden
Lilita and Justin Wood
Aiko Yoshino and Jackson Wilson

UP TO \$249

168 generous donors gave gifts totaling \$14,745. Each gift is greatly appreciated and made a difference in the lives of our students.

2013 BOARD OF DIRECTORS

Art Ringness, President
Steve Hagler, Vice President
Doug Levick, Treasurer
Winn Ellis, Secretary
Veronica Arthur
Eric Boales
Michael Bykhovskiy
Kevin Causey
Rajen Dalal
Helen Hwang
Jonathan Liebttag
Lesley Ross
Woody Scal
Topher Solmssen
Reno Taini

THANK YOU

2013 FINANCIAL RESULTS

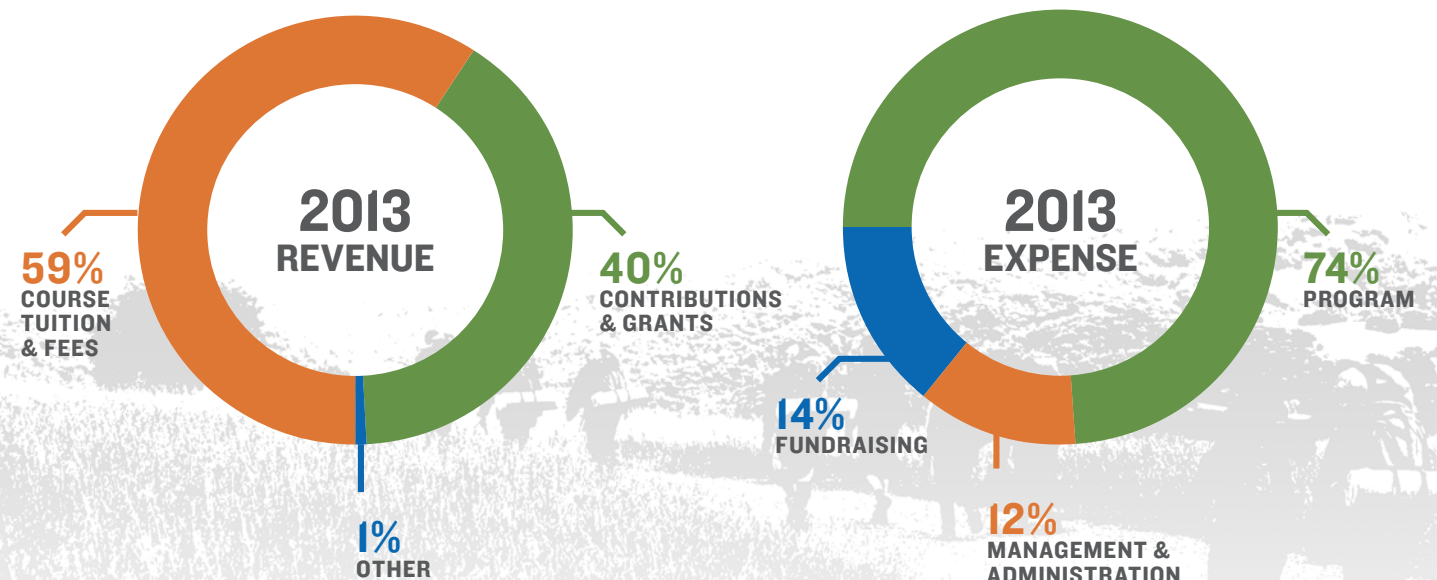
We take stewardship of our donors' funds very seriously. When you make a contribution to Outward Bound California, you can rest assured that your funds will be used for the purpose you intended. We are a fiscally responsible and transparent organization and are happy to share our financial information. Highlights of our 2013 financial results are:

Including net assets released from restriction, we were cash positive for 2013.

Unrestricted net assets at the end of 2013 were \$584,934, up 18% over the previous year. This amount puts Outward Bound California in a place of financial stability in terms of cash flow.

Course tuition and program fees were up 47% in 2013 compared to 2012, due in part to strong enrollment trends and targeted national marketing campaigns as well as local marketing efforts and program partner outreach.

Increases in fundraising, management and administration expenses in 2013 represent investments necessary to support Outward Bound California's programmatic growth.



Revenues & Reclassifications	2013			2012		
	Unrestricted	Temporarily Restricted	Total	Unrestricted	Temporarily Restricted	Total
Course Tuition & Fees	\$930,188		\$930,188	\$632,598		\$632,598
Contributions & Grants	\$382,172	\$240,651	\$622,823	\$597,430	\$167,750	\$765,180
Other	\$9,422		\$9,422	\$30,081		\$30,081
Net Assets Released from Restrictions	\$423,663	\$(423,663)		\$379,941	\$(379,941)	
Total Revenues & Reclassifications	\$1,745,445	\$(183,012)	\$1,562,433	\$1,640,050	\$(212,191)	\$1,427,859
Expenses						
Program	\$1,232,971		\$1,232,971	\$1,154,743		\$1,154,743
Management & Administration	\$200,397		\$200,397	\$135,929		\$135,929
Fundraising	\$224,093		\$224,093	\$134,597		\$134,597
Total Expenses	\$1,657,461		\$1,657,461	\$1,425,269		\$1,425,269
Change in Net Assets	\$87,984	\$(183,012)	\$(95,028)	\$214,781	\$(212,191)	\$2,590
Net Assets, End of Year	\$584,934	\$68,297	\$653,231	\$496,950	\$251,309	\$748,259